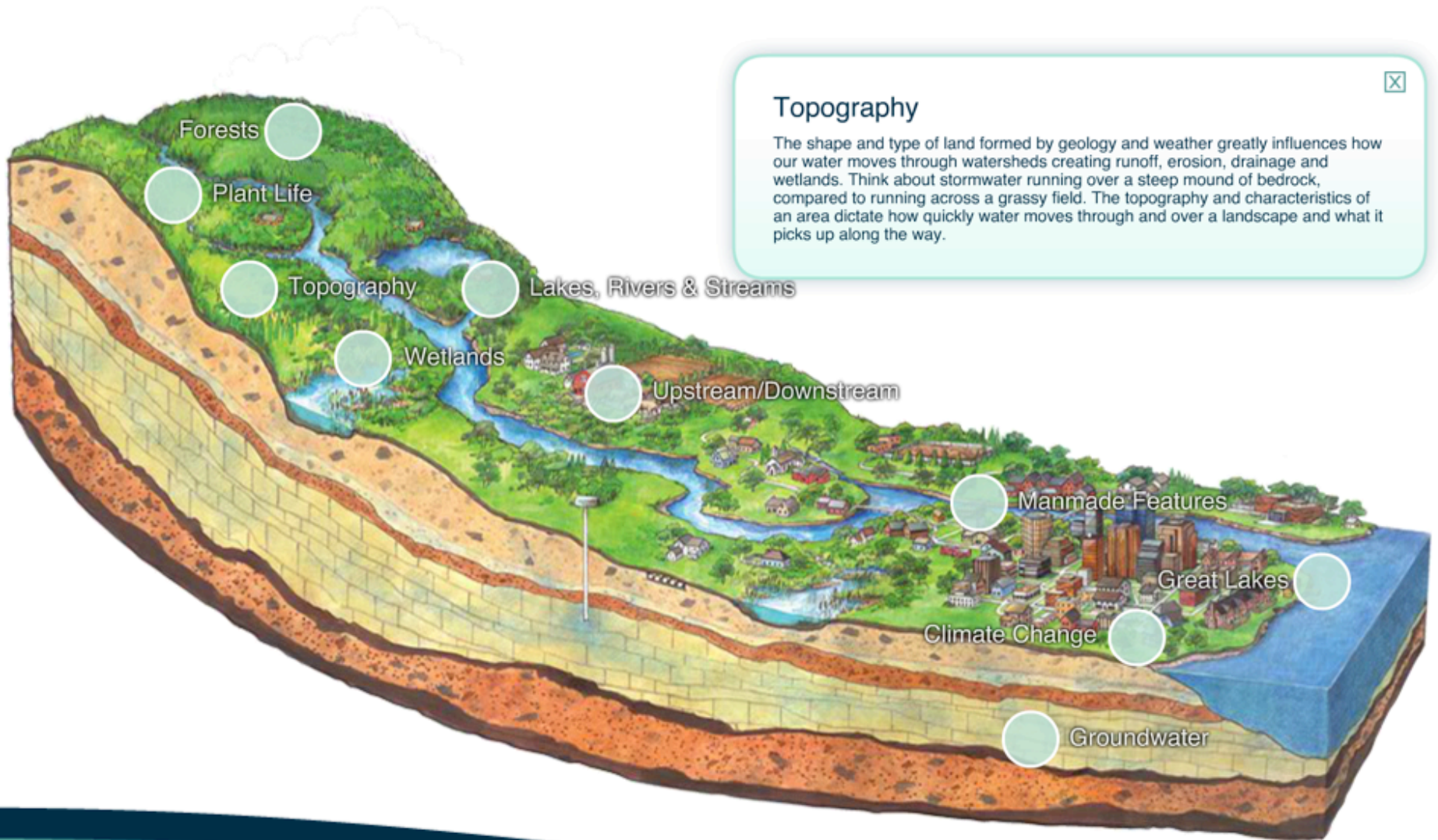


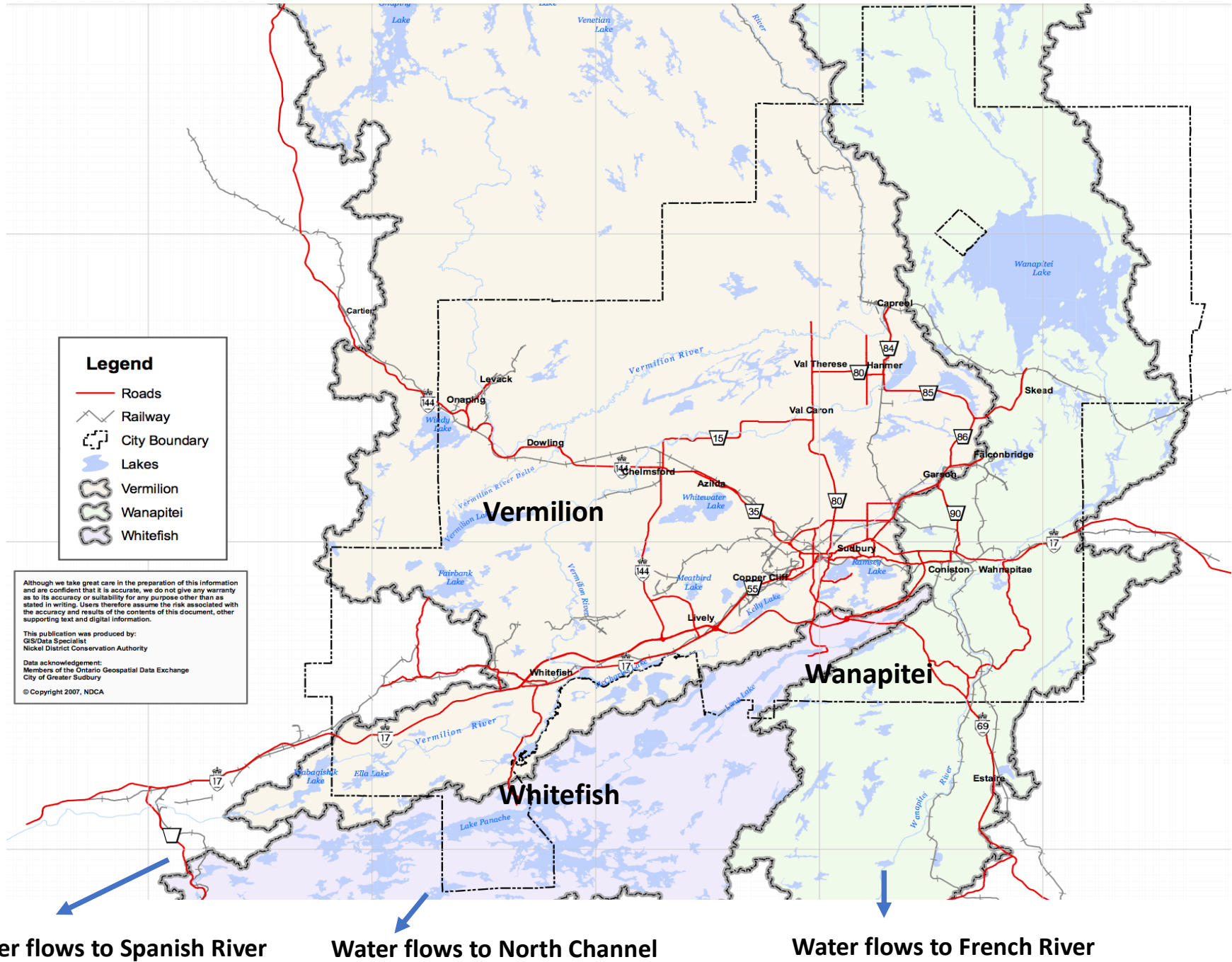
# Watershed 101



**Topography**

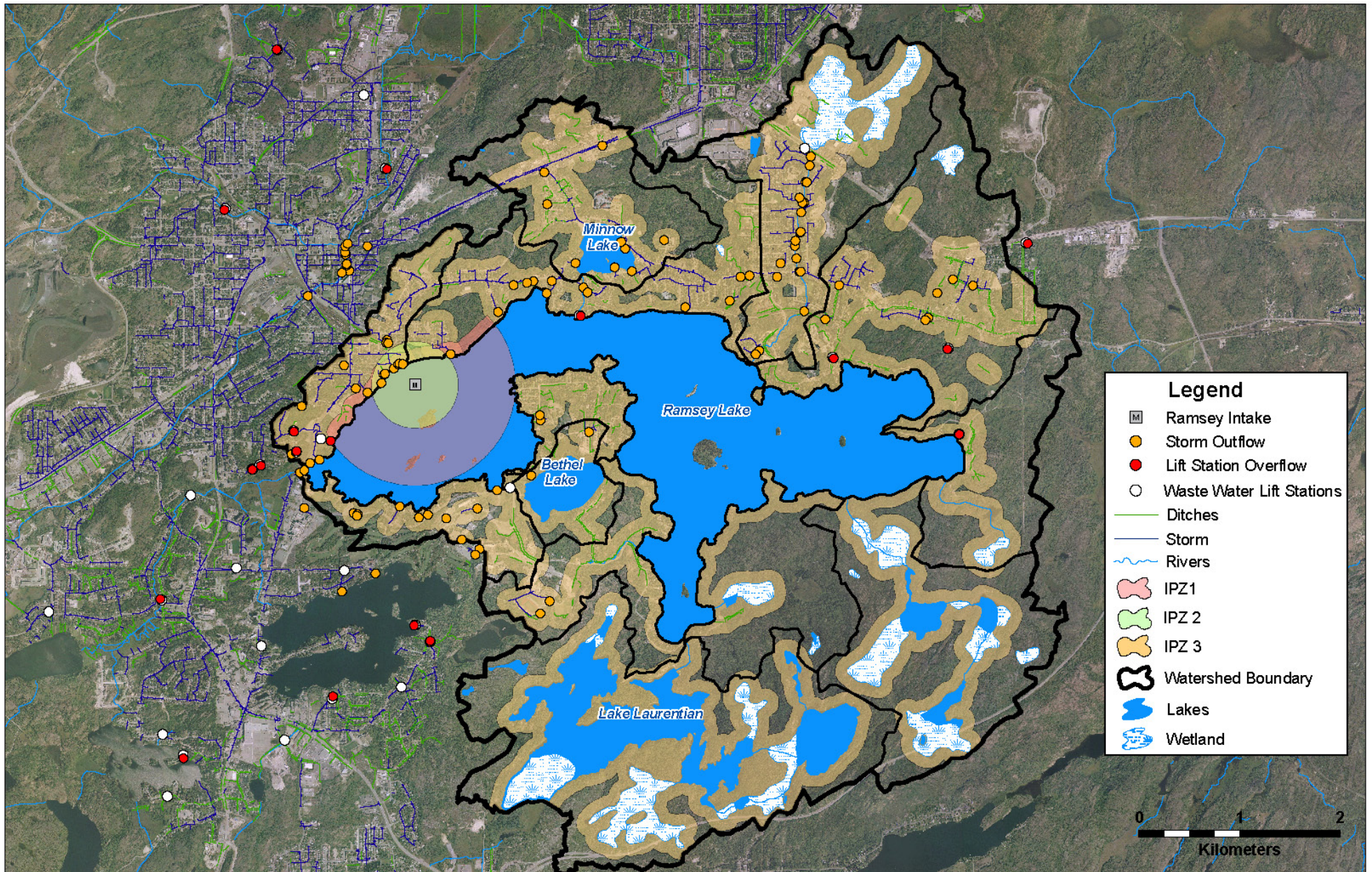
The shape and type of land formed by geology and weather greatly influences how our water moves through watersheds creating runoff, erosion, drainage and wetlands. Think about stormwater running over a steep mound of bedrock, compared to running across a grassy field. The topography and characteristics of an area dictate how quickly water moves through and over a landscape and what it picks up along the way.

# Three major watersheds in Greater Sudbury

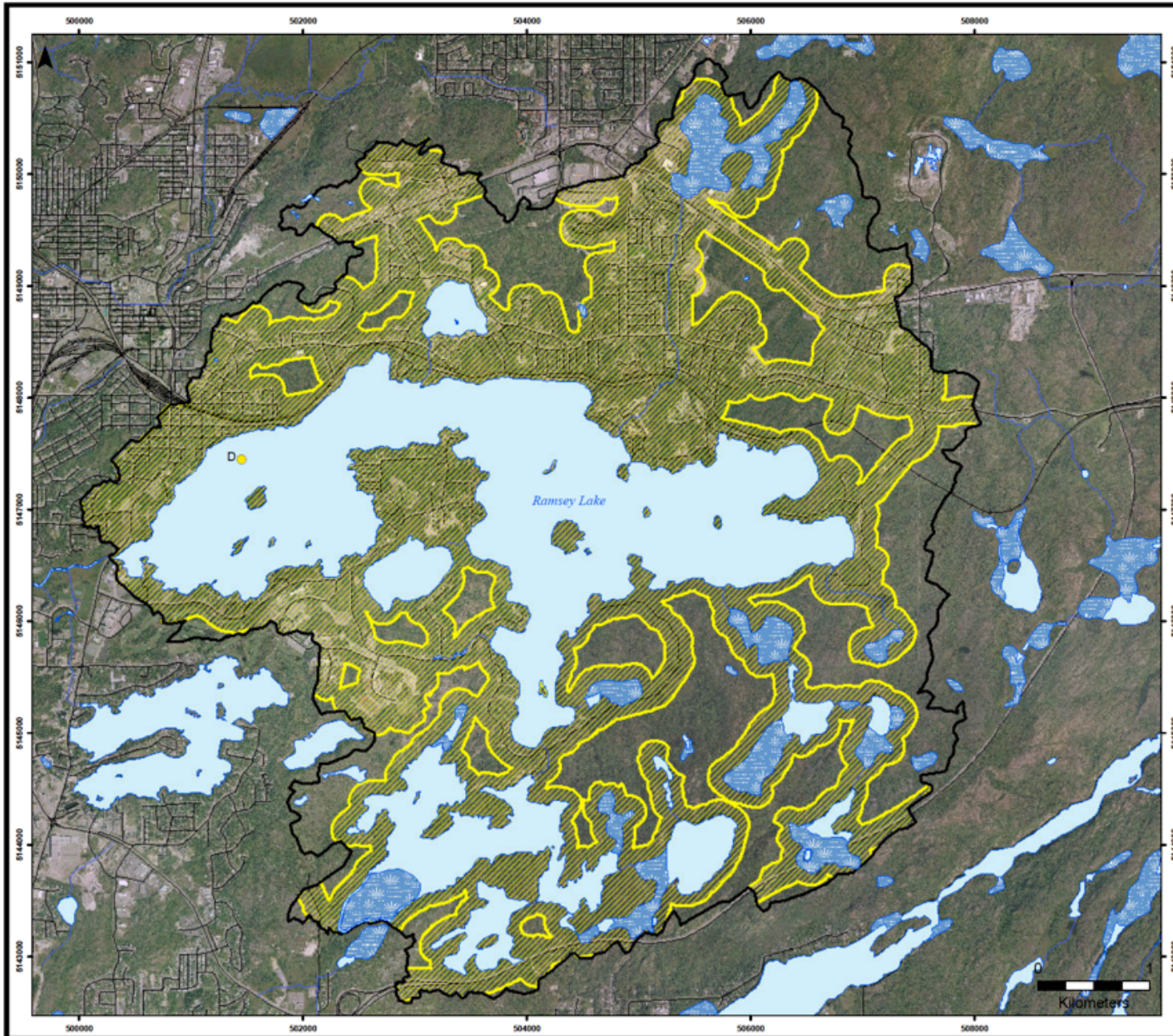


For more information: <http://www.gswa.ca/blog/>

# Ramsey Lake Watershed with Storm Outflows



For more information: <http://www.gswa.ca/blog/>



### Legend

- Surface Water Intake
- Ramsey Lake Issues Contributing Area
- Ramsey Lake Watershed
- Roads
- Railway
- ~ Rivers
- Lakes
- Wetlands



This map has been prepared to meet provincial requirements under the Clean Water Act, 2006 and should not be used for other purposes without consultation with the responsible conservation authority and should not be relied on as a precise indicator of routes or locations, nor as a guide to navigation.

This publication was produced by:  
 Nickel District Conservation Authority  
 200 Brandy Street  
 Sudbury, ON, P3E 5K3

Data Acknowledgement:  
 Members of the Ontario Geospatial Data Exchange  
 City of Greater Sudbury  
 WESA Inc.  
 Golder Associates Ltd.

© Queen's Printer for Ontario (2010)  
 Map Projection & Datum: UTM NAD83 Zone 17N



Made possible by the Government of Ontario.