

**Meeting Notes**  
**Greater Sudbury Watershed Alliance**  
**Private Drinking Water Protection Committee**  
18 January 2018, 12:00 to 1:30 pm  
Living with Lakes Centre, Rm LL113

---

**Present:** Lesley Flowers, Richard Witham, Margaret McLaughlin, Linda Heron  
**Regrets:** Lilly Noble, David Young

**1. Reviewed the 2 November 2017 Committee Meeting Notes**

- Action items were followed up on – to be dealt with in this meeting

**2. Septic Social**

- Linda spoke to Bassim Abbassi, Director of the Ontario Rural Wastewater Center, University of Guelph about presenting a Septic Social
  - An educational event to learn about septic system maintenance and inspection, and freshwater protection
- BA felt that Sudbury was too far to send staff to present
- BA agreed to send a contact list of people who have completed the 4 day course
- RW suggested an online presentation event at the Living with Lakes Centre
- Possible dates: Thursday, April 5, 12, 19 or 26
- Print out 50 [Protect Your Lake – Protect your Investment](#) booklets to sell for a nominal fee (\$1)
- Some people may prefer a pdf - can be emailed to them
- Could invite Richard Auld, SDHU, to attend to answer questions about local issues
- Discussed possibility of inviting local contractors, but decided there wouldn't be enough room at the facility
- Send out a Press Release a few weeks before the event
- If BA confirms that an online presentation would work for them we will make a recommendation to the Board to hold this event

**Action Item:** LH will contact BA to see if he will agree to present online at an event in Sudbury

- MM provided a City map showing addresses not serviced by Municipal Sewer or Water – Addendum 1
- MM also provided 2003 Data – Population and Number of Households on Municipal Sewage Systems – Addendum 2

**3. Road Salt**

- Road salt is becoming more of a threat to public and private drinking water sources, so the Committee will work on this issue
- Gather and generate information in an educational vein
- Perhaps a brochure or newsletter
- Source Water graph from 1991 to 2013 shows a consistent upward trajectory
- RW suggested we prepare a sodium and chloride graph that continue on with the trend, and project it into the future by 5 and 10 years
- Have it ready in time for the 5 February Road Salt Forum – display it on screen

**Action Items:** LH will contact Anoop to:

- Confirm the location of the sample sites for the 1991 to 2013 chart
- Request the data sheet used for that chart.

RH will prepare a chart in Excel for the Road Slat Forum – 5 & 10 year projections of sodium and chloride, as well as benchmarks

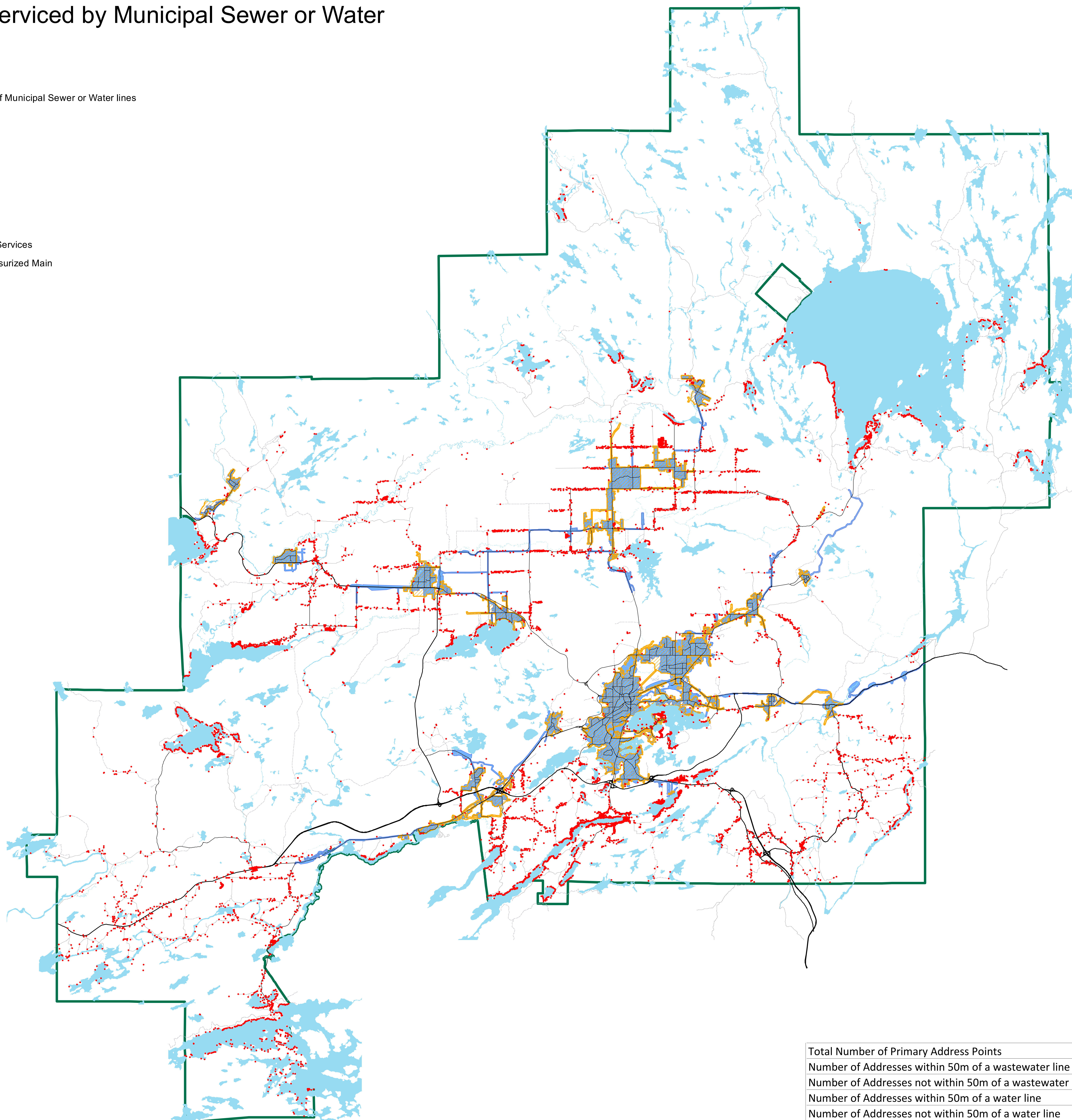
4. **Next Meeting:** Online meeting date yet to be determined.
5. **Meeting Adjourned: 1:30 pm**



# Addresses not serviced by Municipal Sewer or Water

## Legend

- Addresses Not within 50m of Municipal Sewer or Water lines
- Highway
- Major Road
- Local Road
- Lane
- Private Road
- Water Body
- Municipal Boundary
- 50 m Buffer of Wastewater Services
- 50 m Buffer of a Water Pressurized Main



	Number of Primary Addresses	% of total
Total Number of Primary Address Points	61,356	
Number of Addresses within 50m of a wastewater line	49,865	81.3%
Number of Addresses not within 50m of a wastewater line	11,491	18.7%
Number of Addresses within 50m of a water line	51,424	83.8%
Number of Addresses not within 50m of a water line	9,932	16.2%



## 2003 Data

Population and Number of Households on Municipal Sewage systems

Area	Population	Households	Serviced Population	Serviced Households	Unserviced Population	Unserviced Households
<b>Rayside Balfour</b>						
Azilda	14,716	6,066	3,992	1,646	3,463	1,427
Chelmsford			7,261	2,993		
<b>Nickel Centre</b>						
Coniston	12,433	5,000	2,225	895	2,647	1,065
Garson			5,737	2,307		
Falconbridge			717	288		
Wahnapitae			1,107	445		
<b>Onaping Falls</b>						
Downing	4,985	2,184	1,725	756	1,022	448
Levack-Onaping			2,238	980		
<b>Walden</b>						
Lively	9,983	4,650	2,864	1,334	3,152	1,468
Walden			3,967	1,848		
<b>Sudbury</b>						
Sudbury	86,396	41,802	80,206	38,807	3,201	1,604
Copper Cliff			2,315	1,120		
Garson on Sudbury STP			674	271		
<b>Valley East</b>						
Valley East	22,359	8,292	17,972	6,665	4,387	1,627
<b>Capreol</b>						
Capreol	3,385	1,520	3,385	1,520	0	0
<b>Other</b>						
Rural Townships	1,082	708	0	0	1,082	708
<b>TOTAL</b>						
City of Greater Sudbury	155,339	70,222	136,385	61,875	18,954	8,347

Source: 2003 Regional Assessment, 2003 Sewer and Water Treatment Capacity Report

Notes: Household counts include Recreational Dwelling Units (seasonal) and Farm residential Units.

Please note that assessment data is not considered 100% accurate.

An assessment household represents a dwelling and is defined differently from Census households.

Prepared by the Community & Strategic Planning Section, Planning Services Division, City of Greater Sudbury

11-Mar-10

8870 → 16290 → 1250